

♦ Full-Time Researchers



**Mr. Taweephong Suksawat**  
Center Manager

Tel. +66-2524-5516  
Fax. +66-2524-5509  
E-mail: taweephong@ait.ac.th

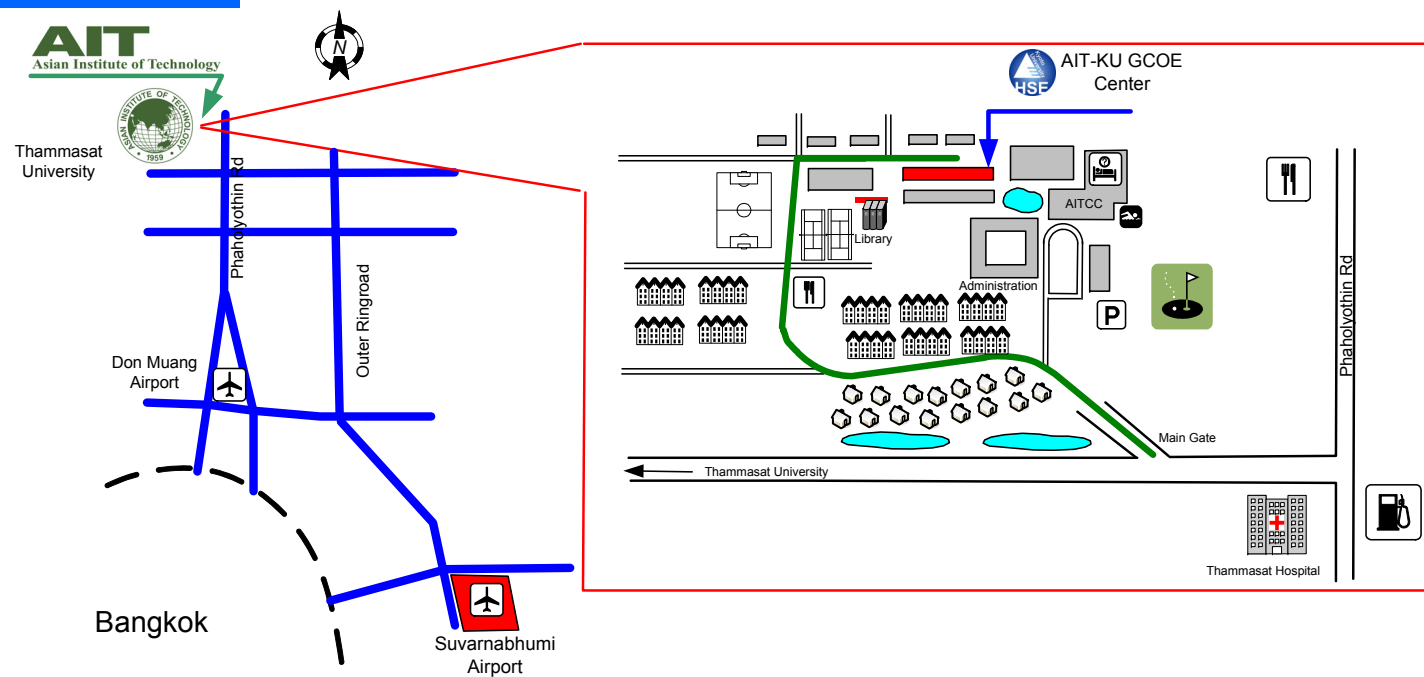


**Mr. Phongpat Kitpayak**  
Research Associate

Tel. +66-2524-5516  
Fax. +66-2524-5509  
E-mail: phongpat@ait.ac.th



♦ Access Map



Kyoto University Global COE Program  
Global Center for Education and Research on  
Human Security Engineering for Asian Megacities

Contact Address :  
AIT-KU GCOE Center  
C/O Geotechnical and Geoenvironmental Engineering Field  
School of Engineering and Technology  
Asian Institute of Technology  
P.O.Box 4, Klong Luang, Pathumthani 12120, Thailand



<http://hse.gcoe.kyoto-u.ac.jp/aitku/hp/index.html>

<http://www.set.ait.ac.th>



# AIT-KU GCOE Joint Research Center for Human Security Engineering







# AIT-KU GCOE Joint Research Center On Human Security Engineering



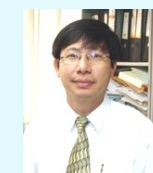
**Prof. Hiroyasu Ohtsu**  
Project Team Leader  
Center Co-Director



**Dr. Noppadol Phienwej**  
Center Co-Director



**Dr. Pennung Warnitchai**  
Faculty in Structural  
Engineering



**Dr. Pham Huy Giao**  
Faculty in Geotechnical and  
Geoenvironmental Engineering

## Urban Infrastructure Management

- Infrastructure Asset Management
- Environment Accounting System for Infrastructures
- Urban Energy Supply System
- Urban Water Resource Management & Food Supply System
- Transportation/Logistics System

## Disaster Risk Management

- Disaster Prevention against Man-Made Hazards

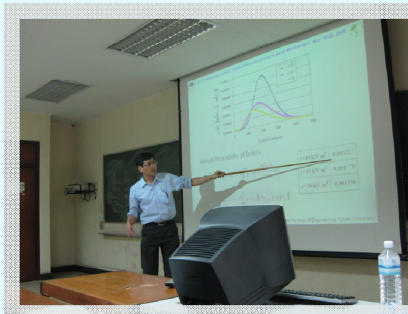
**Bangkok, AIT**

## Educational and Research Activities at AIT-KU GCOE Center

As a joint initiative of the Global COE (GCOE), a five-day intensive course was held at the Asian Institute of Technology, an overseas partner base of the GCOE. The focus of the course was "Geotechnical Infrastructure Asset Management," which is a part of the area of "Infrastructure Asset Management," a key discipline in the research field of Urban Infrastructure Management. In addition to masters and doctoral program students from AIT's School of Engineering and Technology (SET), the course participants included visiting academics from India, as well as doctoral students and researchers from other Thai universities.

On research parts, besides the sudden disasters such as earthquake, tsunami, landslide etc, the slow and persistent one like land subsidence, flooding, seawater intrusion have also affected significantly the economic and social development of urban countries located on the large deltaic plain in the SE Asian region. Study on slow disasters and their mitigation are an integral part of the activities to be conducted by the GCOE at AIT.

## Intensive course on Geotechnical Infrastructure Asset Management



The course was held at AIT in March 16 to 20, 2009 and attended by 43 participants. A group photo of the participants taken at the conclusion of the course clearly shows remarkable diversity of student nationality, and highlights AIT's international character. This course was the first initiative of the Global COE affiliation with AIT, one of the overseas partner bases. It will be repeated next year. The course was also conducted in Hochiminh City, Vietnam under AITCV activities.

## EIT-JSCE joint symposium on Geotechnical Infrastructure Asset management



The EIT-JSCE Joint International Symposium on Geotechnical Infrastructure Asset Management was organized in September 2009 in Bangkok as a part of a continuing series of the collaborative activities between the Kansai Geotechnical Group of Japan and the Geotechnical Sub-committee of Engineering Institute of Thailand. Kyoto University and Asian Institute of Technology through Engineering Institute of Thailand have been cooperating in organizing this series of symposia. The symposium of 2009 was incorporated as a part of activities "Global center for Education and Research on Human Security Engineering of Asian Mega Cities". Altogether the two days programs featured 16 papers presented by leading professors and professions from both countries and 30 papers by young engineers and graduate students on a variety of topics related to geotechnics and geophysics.

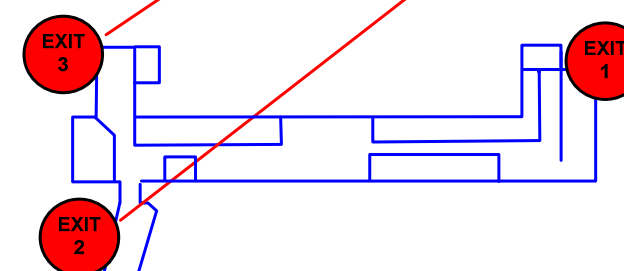


## AIT-KU Joint Symposium on Human Security Engineering

The AIT-KU Joint International Symposium on Human Security Engineering was organized in November 2009 in Bangkok as an annual symposium of GCOE project at KU-AIT GCOE Center. The symposium received a great encouragement and support of Global COE program "Global center for Education and Research on Human Security Engineering" Kyoto University, Japan. The symposium featured keynote lectures by Prof. Kennichi Soka of University of Cambridge and Mr. Oravit Hemachadha, Director, Traffic Engineering Office, Metropolitan Administration (BMA). The two days programs featured 26 papers presented by leading professors around Asian region on a variety of topics related to Human Security Engineering.



## Disaster Mitigation for Subway System



Safety is a key consideration in the construction of the subway. Highest international standards have been used for the design of accident prevention and evacuation systems. Analyzing underground structures can be complex because structural design is developed from social concerns, scientific theories and architectural trends. It is imperative that considerations of underground space and performance reflect not only stationary human activities but also emergency situation during disaster events. Emergency evacuation simulation is made of selected subway stations of Bangkok MRTA system. Other possible natural and man-made disasters such as flood and terrorism, that might occur in subway system, are discussed.